

Intermountain Gas Company Damage Prevention



Know what's below.
Call before you dig.

GOALS OF TODAY'S MEETING:

- Do's and Don't(s) of working around natural gas facilities
- What is a damage?
- How to get help if needed
- Answer any questions or concerns
- Safety for all



5 Steps to Safer Digging Toolbox

<https://www.youtube.com/watch?v=5u7Ksl2rENM&feature=youtu.be>



Digline



**Know what's below.
Call before you dig.**

- Call Before you Dig, 811
 - What is an Excavation
 - Who is the Excavator
 - DO NOT work under other people's locates
 - Responsibilities
 - Digging Within 2 feet
 - Hand excavation
 - Vac. Truck
 - AND it's FREE
- Bad/missing locates
 - Weather
 - Time frame (21 days)
 - Wiped out
- Damage Disputes
 - Pictures
 - Settle at time of damage
 - Who to call for dispute
- Test Post
- Warning Signs





Know what's below.
Call before you dig.

Changes in the DIG LINE LAW



Know what's below.
Call before you dig.

- Damage Prevention Board - made up of 11 members
 - City or County official
 - Elected official from the highway district
 - Employee of Idaho PUC
 - 811 employee
 - Underground facility owner
 - Underground pipeline owner
 - Rural underground facility owner
 - Contractor
 - Building contractor
 - Excavator contractor
 - Agricultural representative



Know what's below.
Call before you dig.

Changes in the DIG LINE LAW



Know what's below.
Call before you dig.

Civil Penalties:

- First violation- Written Warning along with a training course on Underground Damage Prevention
- Second violation- Civil penalty up to \$1,000.00
- Third violation- if within 18 months of last violation Civil penalty up to \$5,000.00
- Remember you will also be responsible for the cost of repairs from the utility company that you damaged

Gas Lines can be anywhere.....



Working around Blowing Gas :

- Call 911/ it is the law
- Do not attempt to secure
- Stay out of the flow of gas
- If you smell it, you are too close
- Consider:
 - Wind direction
 - Traffic in the work zone
 - Public
- Ignition Sources
 - Vehicles, equipment, smoking, cell phones
 - **Do not attempt to put out a flame**





Strafford Township House Explosion

https://www.youtube.com/watch?v=mDAyu_sR3W0

Philadelphia Gas Main Explosion

<https://www.youtube.com/watch?v=wV4OZqSdP1U>

Working Around Gas Pipe

- Types of Pipe
 - Steel
 - Different colors of coating
 - Pressures
 - Plastic
 - Pink, Yellow, Black
 - Pressures
 - Wire
 - Bedding Material
 - Clean sand
 - No reject sand
- Supports
 - Approved Only
- Separation between new and existing facilities





Improper Supports









What is a damage to our facility?

- Pipe scrapes, dents or nicks
- Broken Wire
- Wrap - Damaged or missing
- Broken Pipe
- Damage test posts





Damage

Disturbing Valves

Nicks, Scrapes and Dents

- IGC will determine level of emergency
- Response time
- Emergencies large or small, follow the same rules!!!
- Report damage
- Do not bury until inspected by IGC
- IGC may determine upon arrival if repair can be made at a later date



Broken or damaged wire or test post





Damaged Wrap





Broken Pipe



Repair Expectations

- Non Emergency Repair:
 - Wraps
 - IGC wraps, contractor excavates
 - Response Time
 - Broken Wire
 - IGC fixes, contractor excavates
 - Don't disconnect
 - Response Time
 - Test Post
 - contractor reports location IGC repairs



Repair Expectations:

Emergency Repair:

- Blowing/Leaking Gas
- Expectations from Contractor:
 - Contractor stays out of flow of gas
 - Notifies 911 and IGC
 - Keep all people out of area
 - Do not attempt to Secure blowing gas or extinguish natural gas that has ignited
- Expectations from IGC:
 - Response time
 - Locates
 - Traffic Control
 - Safety Parameters
 - Safe excavation
- EFV Valves
 - Do not assume line is abandoned





Gas Odors

Please report immediately

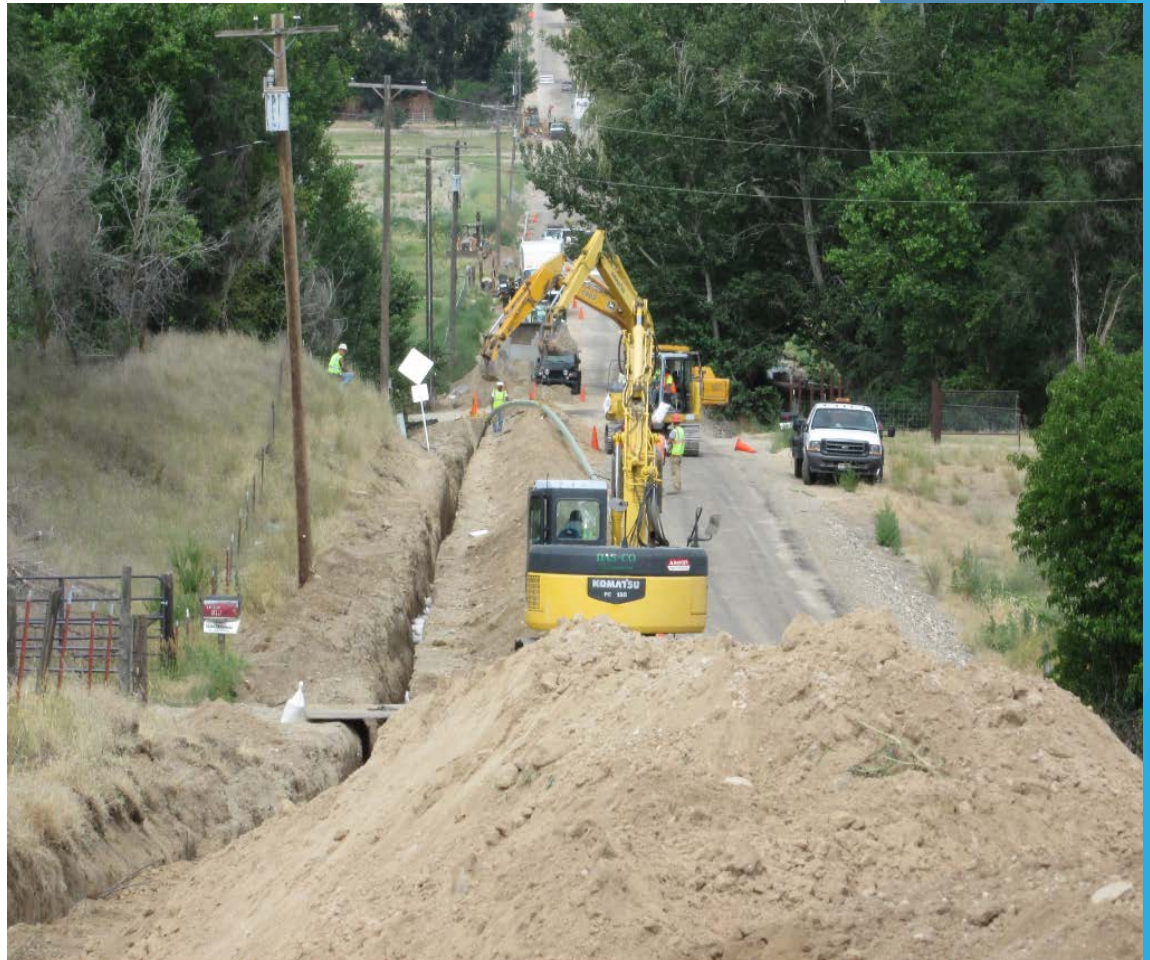
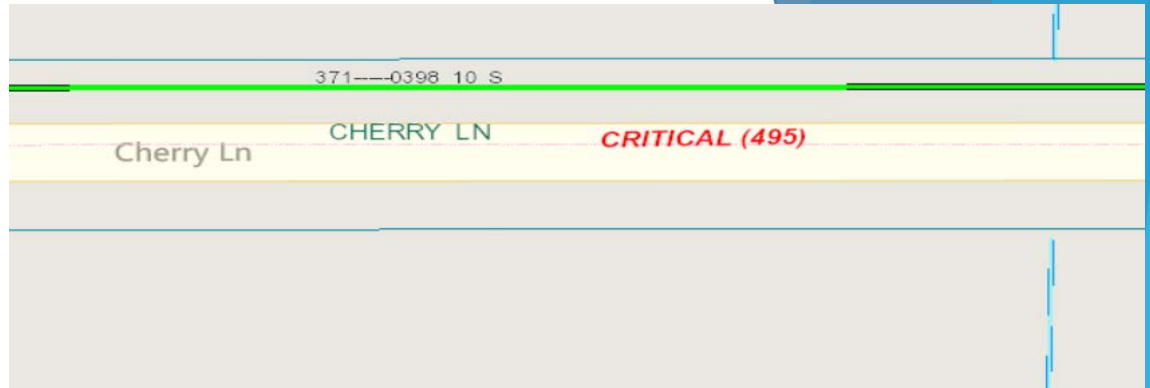
If you can smell it, you are
too close

[https://www.youtube.com/watch?v=ldNR
cuIT0J0](https://www.youtube.com/watch?v=ldNRcuIT0J0)

[https://www.youtube.com/watch?v=nNmS
G4zWTvw](https://www.youtube.com/watch?v=nNmSG4zWTvw)

Critical Lines

- What to Expect
- Phone call from IGC
- May/may not have an inspector onsite
- Damages to a critical line
 - More extensive repairs
 - Longer time frames
 - Increased repair cost
 - \$ Companies bottom line \$



Critical Line Damages=Time & Money



Pressure Control
(PC) truck
required to
secure and
repair critical
lines

- Only two
trucks in the
state





Right of Way Obstacles

- Remotes
- Valves
- Test Posts
- Warning Signs
- Test box



Carsonite Markers - Flat, warning signs only. Usually found near power poles and along edge of right of ways

Test Posts - Contains wires for locating purposes and cathodic protection



High Pressure Service Sets (HPSS)

What, where, why?



Road/Bridge Projects

- Map Requests
- Pot Holing Utilities
 - Contractor pot holes for verification of depth and locates
- Plans
 - Provide copies to IGC
- Time Frames of Relocations
- Pre-con's



Anytime gas facilities are exposed, proper bedding material is **required**

Approved
(No Aggregate)



Not Approved
(Aggregate)



Handouts

- Emergency Number Card
- Dig Law Pamphlet
- Business Cards
- Underground Damage Prevention Act - stiffer penalties for repeat offenders



CALL BEFORE YOU DIG

Bonner & Boundary Counties:
1-800-626-4950

Beneah & Shoshone Counties:
1-800-398-3285

Kootenai County:
1-800-428-4950

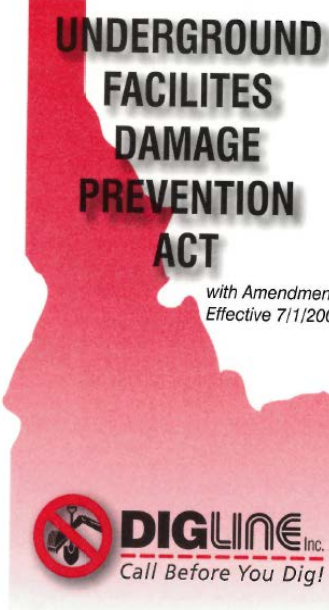

All Other Counties:
1-800-342-1585

 **Idaho ONE CALL**
"Call Before You Dig!"

IDAHO STATE LAW

UNDERGROUND FACILITIES DAMAGE PREVENTION ACT

with Amendment Effective 7/1/200


 **DIGLINE Inc.**
Call Before You Dig!

It's the Law!

- Call your Local One-Call System before Digging
- Wait for the Site to be Marked
- Respect all the Marks
- Dig with Care

Boise 342-1585

QUESTIONS?

